

PRODUCT INFORMATION

Gyro's most economic, low-profile pillar with a 4 fuse capacity.

This pillar is normally buried to within 100 mm of the bottom of the lid so not much is exposed above ground. Commonly used in simple one, two or three phase installations.

MAXIMUM FUSE CAPACITY

4 x 63A

FEATURES

- Fitted with a 4-way neutral bar and rubber apron for maximum safety
- Air ventilation to help dissipate condensation
- Impact and graffiti resistant to reduce maintenance
- UV and heat resistant to increase asset life
- Stainless steel lid screws: 2 x M8 x 16mm button head
- Tapered screw thread allows centring before tightening
- Plastic lid and base recyclable with GYROCYCLE program

Optional Features

- Lock, asset tag or alternative screws fitted to your network spec
- Alternative screws can be provided to suit network spec

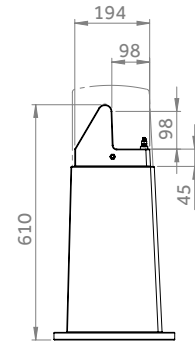
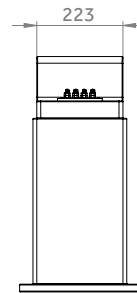
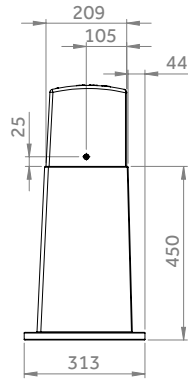
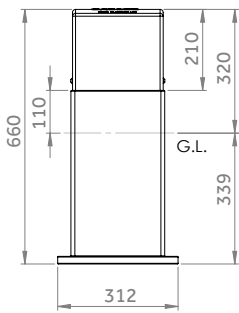
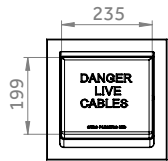


PRODUCT SKU'S

SKU	PRODUCT	DESCRIPTION
201031	EP101 ASSEMBLY & NEUTRAL BAR – BLACK	Assembly – Black Lid
201033	EP101 ASSEMBLY & NEUTRAL BAR – BLACK MAINPOWER	Mainpower spec, 4 screws, MOQ x 20
201030	EP101 / 102 LID ONLY – BLACK	Lid only
201032	EP101 BASE – BLACK	Base only

PRODUCT INFORMATION

2-DIMENSIONAL DRAWINGS



FUSE MOUNTING AREA
MAXIMUM CAPACITY 4x FUSES

